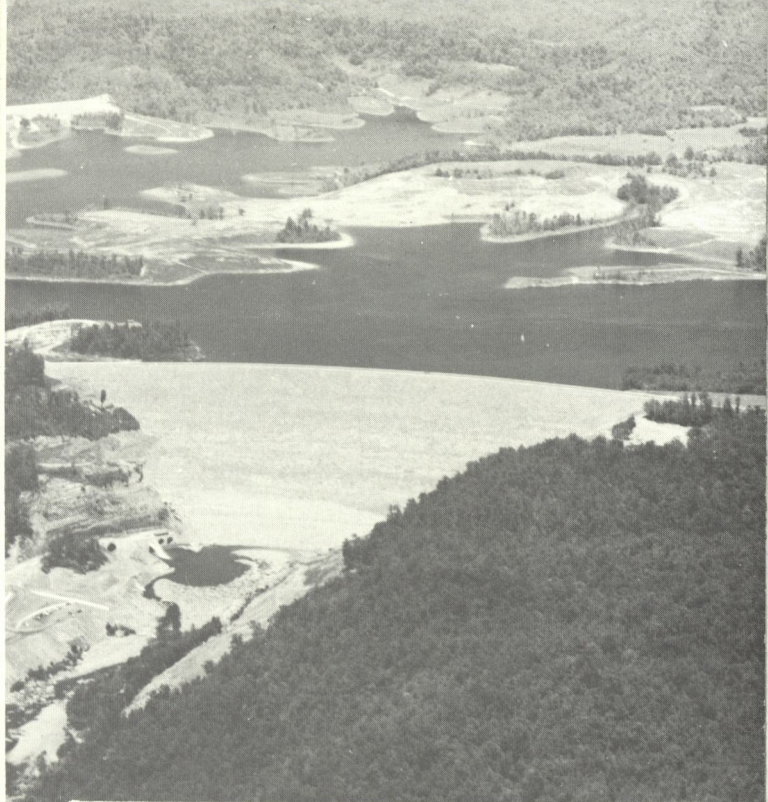


# Summersville

## RESERVOIR



DEPARTMENT OF THE ARMY  
HUNTINGTON DISTRICT, CORPS OF ENGINEERS  
HUNTINGTON, WEST VIRGINIA

AUGUST 1966

*Incl 1-1*

VISITORS WELCOME

The U. S. Army Corps of Engineers welcomes you to Summersville Dam and Reservoir. Although the primary purpose of the project is flood control, the reservoir area is open for public use and recreation. Facilities are available or are being developed for fishing, boating, picnicking, camping and hunting. Overlook areas have been provided at the east and west ends of the dam where visitors may view the lake, the dam, the outlet works and the Gauley River valley downstream of the dam. This folder presents the most important features and statistics concerning the project.

LOCATION

Summersville Dam is located in Nicholas County, W. Va. approximately 9 road miles south of Summersville via U. S. Route 19 or W. Va. Route 39. The reservoir pool behind the dam extends to within 1.5 miles of the Summersville city limits along U. S. 19 highway.

HISTORY AND OPERATION

Summersville Reservoir was authorized for construction by the Flood Control Act of 1938, Public Law No. 761, 75th Congress, 3rd Session, dated 28 June 1938. The first phase of construction was initiated in February 1960 when work was started on the diversion tunnel. The tunnel was completed in December 1963. Construction of the dam, two dikes and the spillway was started in May 1961. The work involved under this contract was accepted for operation in March 1966. Additional features and facilities, approved under the master plan of development, will be provided as scheduled, consistent with availability of funds.

The reservoir will be operated for flood control along the Gauley River and the Kanawha River and as a unit in the comprehensive plan for flood control on the Ohio and Mississippi Rivers.

When operated in conjunction with Bluestone Reservoir on New River and Sutton Reservoir on Elk River, the Summersville Reservoir will provide substantial reductions in flood heights throughout the densely populated and highly industrialized Kanawha River valley. A minimum flow of 100 cubic feet per second will be discharged into Gauley River at all times under all conditions (100 cubic feet per second is equivalent to almost 65 million gallons of water per 24 hour period). During long drought periods, the seasonal pool level will fall below elevation 1650 in order to maintain a flow of at least 100 cubic feet per second downstream. During normal periods, flows discharged from the reservoir will exceed 100 cubic feet per second.

OPERATION OF THE DAM

The rock-fill dam with a maximum height of 390 feet is the highest completed rock-fill dam east of the Mississippi River. The release of water stored in the reservoir is through a circular tunnel, 29 feet in diameter, which branches into three 11-foot diameter conduits at the downstream end. Flow is controlled by three 9-foot diameter Howell-Bunger fixed-cone dispersion valves. The Howell-Bunger valves at Summersville are the largest of this type in use in the world. Low-flow discharge is controlled by a 30-inch diameter Howell-Bunger fixed-cone dispersion valve. The seasonal pool is maintained for recreation, fish and wildlife habitat and water storage to increase low flows in Gauley River downstream from the dam and provide an assured minimum flow downstream throughout the year. Space for storage of flood water above the elevation of the winter pool is provided to reduce floods along the Gauley and Kanawha Rivers and contribute to reduction of flood heights on the Ohio River.

PUBLIC USE AND RECREATION

Public use and recreation activities are allowed on all water and shoreline areas in the reservoir. Basic facilities are being provided by the Corps of Engineers in the areas indicated on the reservoir map. Public use facilities include picnic areas, boat-launching ramps, boat docks, trailer and tent camping sites, parking areas along with overlook and scenic vantage points. Sanitary facilities and approved water supply are available. For air-minded visitors, there is a 3,000-foot paved landing strip, lighted for night operation with storage areas and hangar.

Concession sites are planned to provide marina facilities, supplies and snack bars.

REGULATIONS

Public use of the reservoir and the lands within the project boundary is governed by certain rules and regulations prescribed by the Department of the Army and by applicable laws of the State of West Virginia. These rules and regulations are established in the interest of the general welfare and safety of the public and the protection of Government property. Copies of the applicable rules and regulations may be obtained at the office of the Reservoir Manager.

GENERAL INFORMATION

1. Recreational use of the area is subject to all applicable State, Federal and local laws and sanitary regulations.
2. Commercial operations of any kind are prohibited, except as specifically authorized under concession agreement with the Corps of Engineers, Department of the Army.
3. The destruction, injury, defacement or removal of public property or of vegetation, rock or minerals, except as specifically authorized, is prohibited.
4. The construction of docks and other structures in the water and the installation of any permanent facility on Government property is prohibited, except as specifically authorized by written approval of the Corps of Engineers, Department of the Army.
5. Boats must be registered under all applicable State and Federal laws or regulations.
6. Access for the general public to launch boats is permitted only at the public launching sites.
7. Camping is permitted in designated areas only and a permit is required. Permits may be obtained at the office of the Reservoir Manager.
8. Campfires must be extinguished and the area left neat and clean after use.
9. Refuse, garbage, rubbish or waste of any kind shall be disposed of in receptacles provided for this purpose.

More detailed information may be obtained from:

Reservoir Manager  
Summersville Reservoir  
P.O. Box L  
Summersville, W. Va. 26651

or

Reservoir Manager  
Kanawha Area  
P.O. Box 426  
Sutton, W. Va. 26601

or

District Engineer  
Department of the Army  
Huntington District, Corps of Engineers  
P.O. Box 2127  
Huntington, W. Va. 25721



PARKING AND PICNICKING SOUTH OF U. S. 19 BRIDGE

*Enjoy your visit and  
make Summersville your  
Vacation Land*

SUMMERSVILLE BRIDGES WIN PRIZES

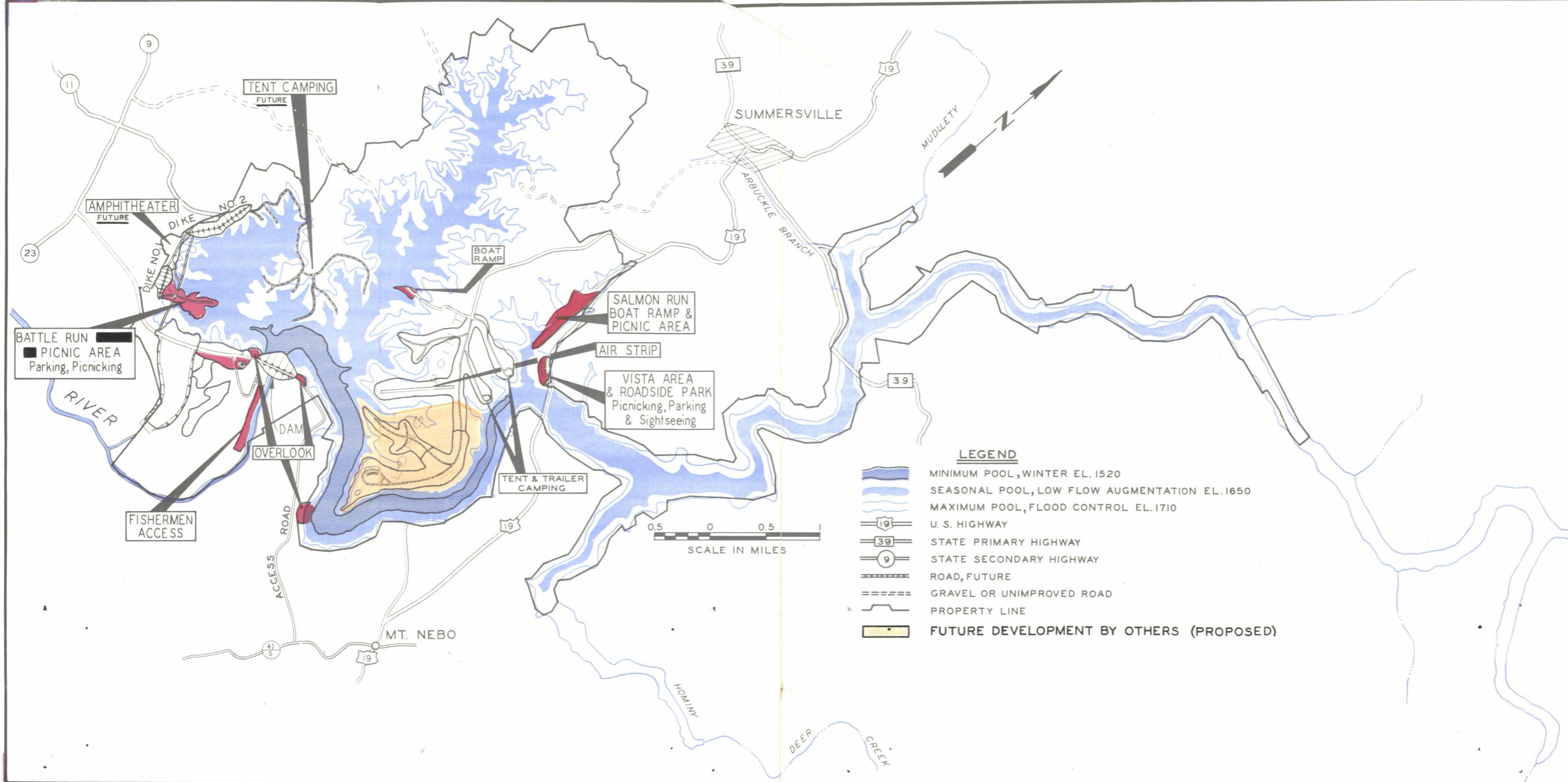
Two new bridges constructed in connection with relocated highways in the reservoir area received Awards of Merit under the 1965 Prize Bridge Competition sponsored by the American Institute of Steel Construction -- the 37th annual competition of this type. There were 67 entries from which were selected five Prize Bridges and ten Award of Merit Bridges. The U. S. Route 19 bridge won an Award of Merit in the Long Span Bridge category, and the State Route 39 bridge won an Award of Merit in the Medium Span, High Clearance category.

FOR SAFETY'S SAKE

- Don't overload your boat.
- Practice good manners afloat at all times.
- If your boat upsets, stick to it and use it as a life preserver.
- A boat must carry at least one life preserver for each occupant.
- Motorboats when approaching small boats or docks shall reduce speed sufficiently to insure safety of lives and property.
- Obey bad weather warnings. Head for shore before a storm breaks.
- Don't pass a boat in distress. Give help. If you need help, ask for it.
- Boats must not approach closer to the dam or appurtenant structures than indicated by warning signs or buoys.
- Don't swim alone. There's safety in numbers.
- Look before you leap. Be sure water is deep enough before diving.
- Know your own strength. Don't overestimate your swimming ability.
- Mind your manners. Mischievous acts or pranks might cause a tragedy.



BOATING AT LONG POINT



OVERLOOK AT WEST END OF DAM NEAR THE INTAKE



PANORAMA OF THE RESERVOIR WITH DAM AT RIGHT CENTER AND  
DIKE NO. 1 IN FOREGROUND