

Subscriptions
Available



The Shepherdstown CHRONICLE

News and Views

February 7, 1992

VIEWPOINTS

*Democratic Nominees
for County Commission,
McGhee and Speaker*
pages 4 & 5

COMMUNITY CALENDAR

page 9

BUSINESS

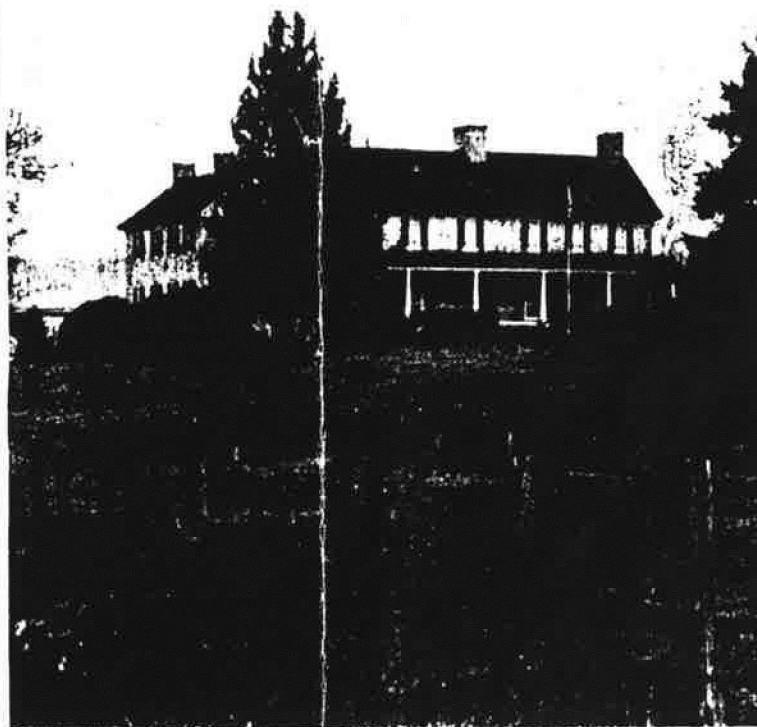
*Award-Winning
Bavarian Inn*
page 19

NEIGHBORS

*The Rockenbaughs
page 7
Shepherdstown-1921*

We Want to be Good Neighbors

The Fish and Wildlife Service Makes Plans to Move to Shepherdstown



The United States Department of the Interior, U.S. Fish and Wildlife Service, announced in January plans to purchase 528 1/2 acres from Jessie Hendrix. The property is located four miles north of Shepherdstown on Shepherd Grade Road at Terrapin Neck. Plans are underway to construct a national Fish and Wildlife Training Center here.

The training center is intended to be unique and national in scope, and will be utilized by the Fish and Wildlife Service and other federal, state and private conservation organizations. The facility will meet a critical need for career training of fish and wildlife professionals, while at the same time preserving over 500 acres on the Potomac River at Terrapin Neck.

Planning for a National Fish and Wildlife Training Center began in

1990. \$4.9 million was appropriated for planning and assessing the feasibility of an aquarium for public education. To date a total of \$45 million has been appropriated.

Plans for a public aquarium which had been expected to generate one million visitors a year have been tabled. According to Rick Lemon, Chief of the Office of Training and Education, "No money has been appropriated by Congress and there are no plans to place an aquarium on the Terrapin Neck site. It would be more appropriate to place an aquarium on property we own in Harpers Ferry."

The actual buildings and infrastructure for the training center will have an approximate 50 acre "footprint". Buildings will be

NEIGHBORS continued on page 3

February 7, 1992

NEIGHBORS *cont. from page 1*

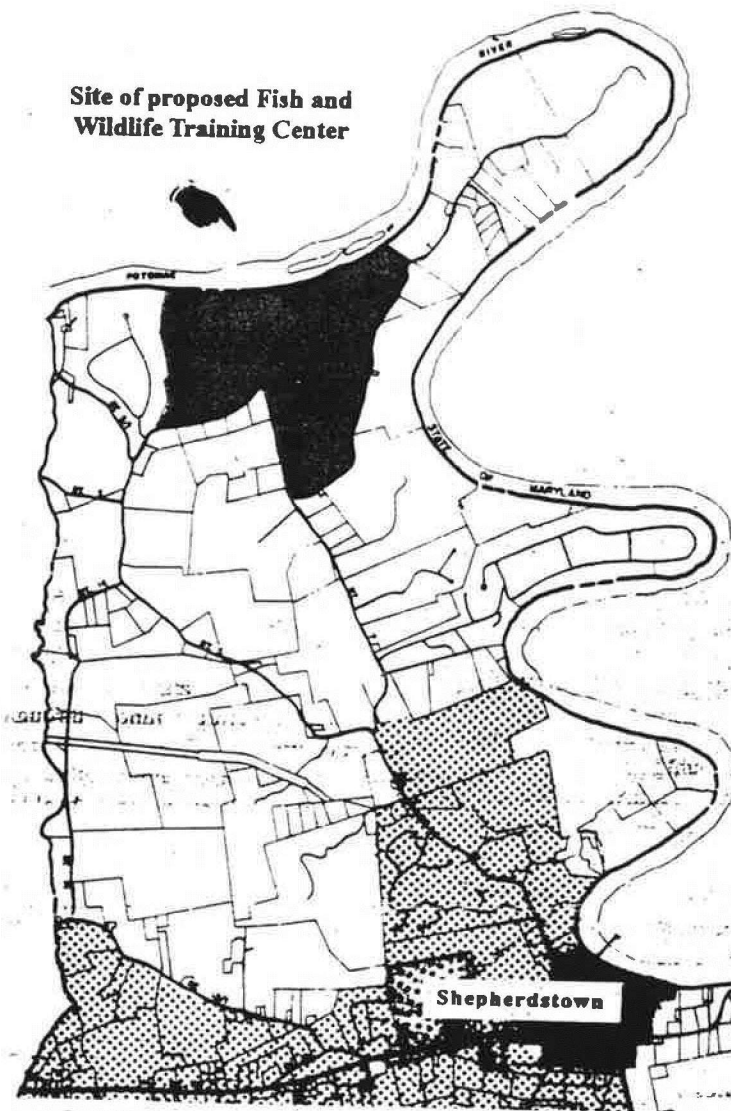
located at different locations on the site and will have appropriate buffer so that the view from the road will continue to be fields and trees.

The entrance to the facilities will most likely be located off Shepherd Grade Road halfway between the Terrapin Neck Road and the Hendrix Farm according to Lemon.

the Hendrix property is expected in early March. Hendrix will maintain a life estate in the home and several adjacent outbuildings on the farm. The Fish and Wildlife Service is presently conducting a survey of the property and the life estate boundaries.

Fish and Wildlife officials will spend most of 1992 drafting a master plan for the site. Actual con-

Site of proposed Fish and Wildlife Training Center



Facilities will include: 12 classrooms; 4 laboratories; audio-visual production facilities, including satellite up-link capability; an auditorium; housing for 150 to 200 students; physical training facilities; and other associated facilities (food service, administration, support services, etc.)

The closing date for purchase of

struction of facilities will not begin until 1993. Completion is expected in 1995. It is estimated that up to 2000 jobs will be created directly or indirectly during construction. A payroll of over \$80 million will be generated by the construction.

Approximately 250 jobs will be provided by the facility on an annual basis according to Lemon.

Half of these jobs will be service jobs such as maintenance. The other jobs will be filled by fish and wildlife personnel. Services required by the facility will be contracted out to local businesses to the maximum extent possible states Lemon. Payroll of annual operations of the facility will be over \$10 million.

Lemon feels that there will be exciting opportunities to work cooperatively with Shepherd College and local schools to jointly develop curriculum. The Fish and Wildlife Service would like to work as partners with schools in environmental education and to develop wildlife-related curriculum to help educate students in science and math and other important subjects.

"All appropriate steps will be taken to minimize the traffic impact on Shepherd Grade and Terrapin Neck Roads," says Lemon. "If necessary we will make plans to bus people in to the training center from a neutral spot to lessen the

impact." The FWS also plans to work with state and federal officials to upgrade the road. Shepherd Grade Road is an extremely narrow, tar and chip road with no shoulders. The road has many dangerous curves and blind hills.

"I lived in Shepherdstown for a year. Charlie Prinz was my landlord. I love the area. We look

forward to being good neighbors," says Lemon.

Questions on the project can be directed to Lemon or Tom Davis, Facility Development Coordinator at (703) 358-1781. They will be more than happy to meet with homeowners' associations or other individuals and groups.



HD CHINA KITCHEN

On the corner of German and King Streets, Shepherdstown

Now Offering
Daily Specials

Offering authentic Szechuan & Hunan style cuisine

- American entrees • New Chef's suggestions
- Vegetarian specials • Most brands of beer

Eat-in or take-out (304) 876-6620

Tue & Thur 11am-9:30pm • Fri & Sat 11am-10pm • Sun & Holidays 11am-8:30pm

All-You-Can-Eat Sunday Buffet 11:30am-3:00pm

VISA • MASTERCARD • AMERICAN EXPRESS

ONE VALLEY BANK®

The One Bank For All Of West Virginia

of

Shepherdstown and Ranson